

Instruction for BioMax V2 + V3 Extra Equipment connector

When using the RJ45 connector on BioMax controller V2 + V3 controllers for extra equipment, for example the SMS box, an adaptor must always be connected between the controller board and the connected equipment.

BioMax V4 and newer does not use this adaptor!

This adaptor is part of the cable set delivered from the controller vendor, but is not always mounted on the board.

In these cases, the user must connect the adaptor.

Some cable sets (BioMax V3) is delivered with a wrong type of adaptor. This must not be used!

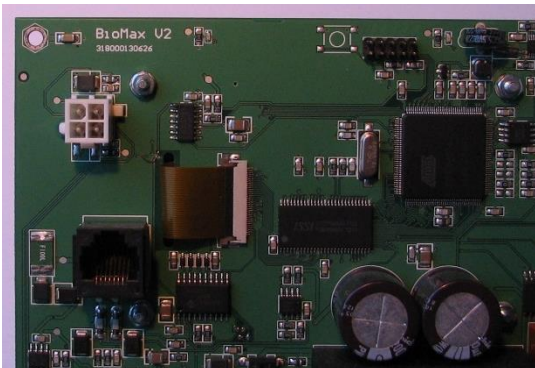
Correct adaptor:



Wrong adaptor!



The adaptor must be used with BioMax V2 + V3 Controllers. The version number is printed in the top right corner:



Connect the adaptor as below. The equipment is connected to the adaptor box with a standard RJ45 cable.

